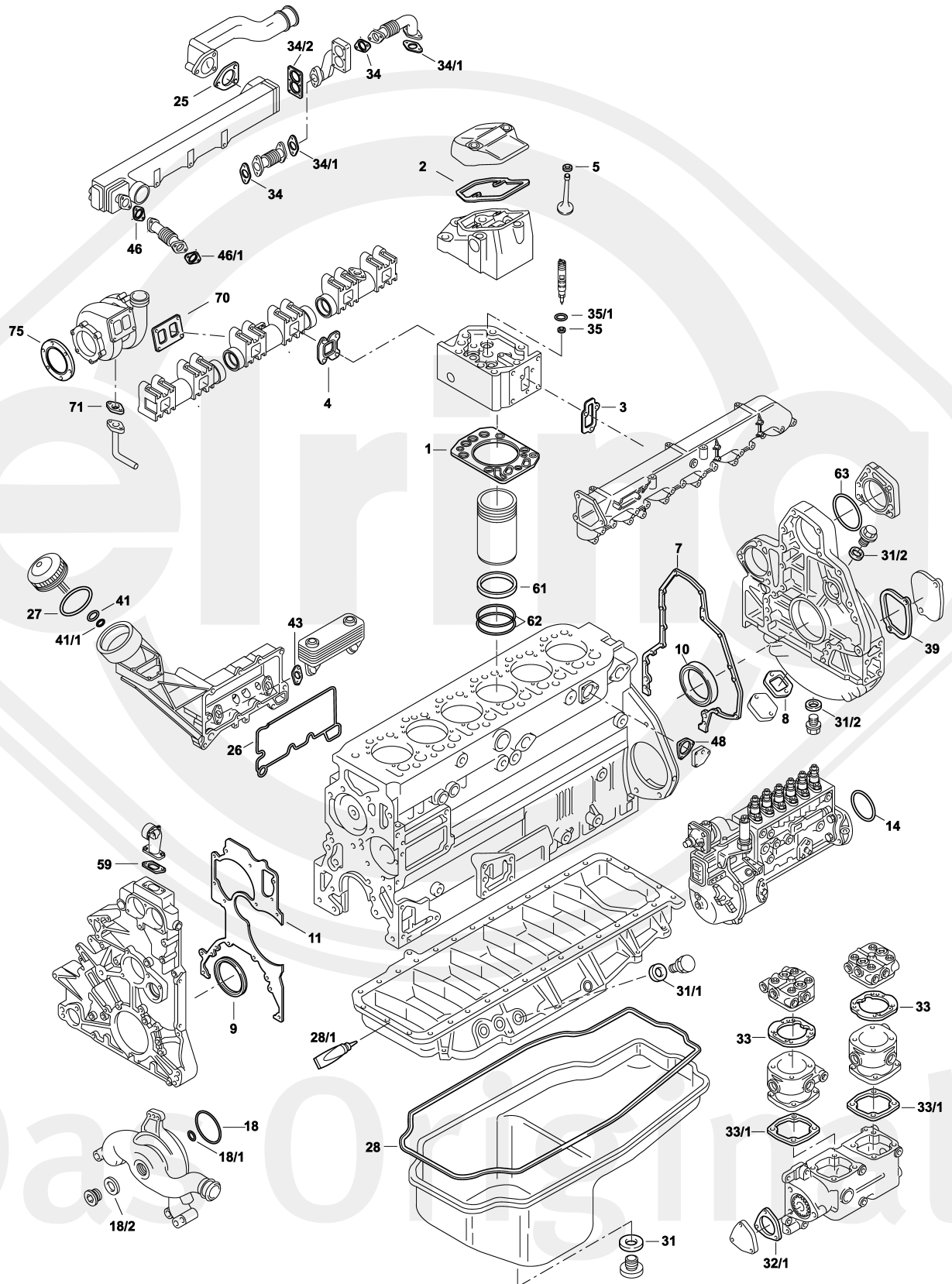




Das Original

MAN

D 2876 4V

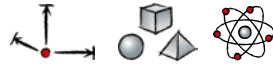








D 2876 LF 12 | 13 | 25

D 2876 LOH 20 | 21

D 2876 LUH 23-52



S ⊕*	124.961	1x	51.00900-6652	–	D 2876 LF 12/13/25   LOH 20/21
ES ⊕	009.981	6x	51.00900-6653	–	D 2876 LF 12/13/25   LOH 20/21   
CS *	353.551	1x	–	–	
ZLBS	542.340	6x	–	–	incl. 51.96501-0745 (2x) & 51.96501-0746 (2x)
ZLBS	216.941	6x	–	–	incl. 51.96501-0540 (1x) & 51.96501-0522 (2x)
VAS	830.941	2x	–	–	incl. 51.04902-0033 (12x)
OKS	537.770	1x	–	–	–
ZKS	156.800	6x	–	M16x2x225,8/287,3	–
TLS	716.120	1x	–	–	–

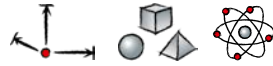
1	099.980	6x	51.03901-0382	Ø 129 mm , ME-Insert	–
2	100.013	6x	51.03905-0190	ME	with cable bushing
3	100.040	6x	51.08902-0202	–	–
4	100.020	6x	51.08901-0155	–	–
5	814.882	12x	51.04902-0033	9x12/15,4x11 FPM	–
7	829.595	1x	51.01903-0252	–	–
8	705.708	1x	04.10394-9292	70 ml	 Dirko™ HT 
9	766.853	1x	51.01510-6004	105x130x12 AW/BS RD PTFE/ACM	–
10	766.829	1x	51.01510-0206	120x140x13 AW/BS LD PTFE/ACM	–
10/1	828.637	1x	51.01501-6012	120x140x13 AW/BS LD PTFE/ACM	 51.02130-0013
11	746.793	1x	51.01901-0131	–	–
14	106.607	1x	51.96501-0346	138x3,5 FPM RD	–
18		1x	06.56939-0067	75,87x2,62 EPDM A	–
18/1		1x	06.56939-0046	23,52x1,78 EPDM A	–
18/2	031.151	1x	06.56200-0707	42x49x2 CU A	–
25	924.971	1x	51.06901-0157	–	–
26	012.300	1x	51.05901-0122	–	–
27		1x	51.96501-0487	–	–
28	845.541	1x	51.05904-0198	Elastomer/Rubber/Caoutchouc/ Goma	–
28/1	705.708	1x	04.10394-9292	70 ml	 Dirko™ HT 






D 2876 LF 12 | 13 | 25

D 2876 LOH 20 | 21

D 2876 LUH 23-52



31	153.260	1x	06.56631-0110	22,7x30x2 FE/FPM	-
31/1	122.904	1x	06.56190-0713	18x24x1,5 CU A	-
31/2	115.100	2x	06.56190-0706	14x20x1,5 CU A	-
32/1		1x	51.08902-0151	-	-
33	775.790	2x	51.54901-0027	-	-
33/1	756.220	2x	51.54901-0028	-	-
34	747.010	2x	51.08901-0117	-	-
34/1	747.190	2x	51.08901-0121	-	-
34/2	761.051	1x	51.08901-0115	EWP/soft material	-
34/2	761.061	1x	51.08901-0114	Metaloseal	LF
34/2	100.080	1x	51.08901-0166	MLS	LUH 23-52
35	293.140	6x	51.98701-0118	7,6x15x1,5 CU A	-
35/1		6x	06.56333-2256	24x30x3 FPM A	-
39		1x	51.01903-0235	-	-
41		1x	51.96501-0486	12x2 ACM RD	-
41/1	597.848	1x	51.96501-0485	8x2 HNBR RD	-
43	759.296	2x	51.96601-0416	-	-
46		1x	51.08901-0124	-	-
46/1	747.050	1x	51.08901-0120	-	-
48	924.971	1x	51.06901-0157	-	-
59	768.392	1x	51.06901-0111	EWP/soft material	-
61	803.881	12x	51.96501-0745	138x2,1 FPM RD	-
61	131.020	6x	51.96501-0540	136x3,35 FPM PR	-
62	863.631	12x	51.96501-0746	144x4 FPM-PX RD	-
63	244.848	1x	51.96501-0324	126x3 FPM RD	-
70	139.090	1x	51.08901-0182	-	-
71	804.580	1x	51.96601-0575	-	-
75	314.812	1x	51.08901-0096	-	-